

FOR SALE

3780 Greenway Circle
Lawrence, Kansas



P R E D I U M



**cGMP BIO PHARMACEUTICAL
MANUFACTURING PLANT
IMMEDIATELY AVAILABLE**

For Information Please Contact:

Mitchell H. Wolff, Principal
Predium
7160 Dallas Parkway, Suite 650
Plano, TX 75024
Phone: 469.467.2002
email: mitch@predium.com



CAMPUS INFORMATION

3780 Greenway Circle
Lawrence, Kansas



3780 Greenway Circle Lawrence, Kansas

This State of the Art facility is located off Kansas Highway 10 on Greenway Circle – less than four miles from I-70, two miles from University of Kansas, and sixty miles from the Kansas City International Airport.

Year Built:	Constructed: 2004 Validated: 2005
Facility Rentable Area:	44,465 Rentable Square Feet Consisting Of: Process Area 7,600 SF, Class 100,000 or better Utility 15,400 SF Analytical Laboratory 2,000 SF Document Control Vault 450 SF, FM200 Protected Warehouse 8,500 SF Cold Storage 700 SF (18,600 cu.ft.) Office 10,000 SF
Acres:	Approximately 12.5 acres graded to accommodate expansion
Parking:	Approximately 50 spaces. However, parking could very easily be adapted to meet perspective needs
Zoned:	Light Industrial which covers commercial use

CERTIFICATIONS

cGMP certified, FDA Registered, controlled/classified environments meet ISO 14644-1 Class 5, 7 and 8 standards. Process areas are all Class 100,000 or better. The facility has two Class 10,000 suites, two Class 100 Hoods. Complete with all operating permits, the facility is a State of Kansas Certified Lab.



PROCESS EQUIPMENT

3780 Greenway Circle
Lawrence, Kansas



Process Equipment: Process Vessels (316L SS)
(2) - 12,000 L
(3) - 6,000 L
(3) - 5,500 L
(3) - 1,000 L

Ultrafiltration/Diafiltration System
(500 SF Membrane)

Distributive Control System—
Siemens PCS7, Simatic Batch



Utility Equipment: Boilers, two (2) - 200 hp each

Clean-In-Place systems, two (2) segregated systems

Water System
Multi-Media Filtration
Carbon Filter
Mixed Bed Deionization
RO Water Distribution
Reverse Osmosis Water Purification, 35 gpm
18,000-L 316 L SS RO Water Storage Tank

Water Softener
Ultraviolet System
Sub-micron Filtration

CleanSteam Generation and Distribution, 1,500 lb / hr.

5,800-L Hydrochloric Acid Storage Tank And Distribution

5,800-L Sodium Hydroxide Storage Tank and Distributions

Air Handling Units, seven (7) separate systems

HVAC Chilled Water Generation and Distribution, two (2) 230 tons

HVAC Hot Water Generation and Distribution

Process Chilled and Hot Glycol Generation and Distribution, 125 tons

Compressed Air, two (2) 125 CFM each

Vacuum Generation and Distribution

Lab Gas Systems, three (3) separate systems



COMMUNITY OVERVIEW

3780 Greenway Circle
Lawrence, Kansas



P R E D I U M

Lawrence, Kansas

Kansas is a right-to-work state whose people work hard and smart, whether in the executive suite or the production line. Lawrence's civilian labor force totals more than 56,000, and the seven-county available labor pool stands at 106,000. Unemployment averages 4.4 percent

In 2002, The New York Times ranked Lawrence second in job growth, among top metro areas. For companies that require skills ranging from the biosciences to information technology to manufacturing, Lawrence serves as a rich recruiting source. Nearly 75 percent of local industries rate the work force above average in areas such as availability, quality, stability and productivity. What is responsible for the broad mix of workers available to a range of businesses? Preparation. Lawrence is the sixth-best educated community in the nation. Forty-three percent of the work force over the age of 25 has earned a bachelor's degree.

The flagship institution of the state, the University of Kansas serves as home to 12 professional schools plus the College of Liberal Arts & Sciences. More than 28,000 students from 51 states and 116 countries around the globe study on one of four KU campuses. About 4,000 students a year march through commencement ceremonies and into the work force.

The University of Kansas is a major research university with a long and successful track record of research collaboration promoted through independent, multidisciplinary research centers that focus on common themes. KU is a Carnegie Doctoral/Research Extensive University and has been a member of the Association of American Universities since 1909. Research at the University of Kansas has experienced unprecedented growth in recent years, with sponsored project expenditures reaching \$182 million in Fiscal Year 2004. Federal sponsorship is obtained largely through nationwide, peer-reviewed competitions, and reflects the quality of the university's research and its faculty.

The KU School of Pharmacy ranks third among the nation's best schools for securing funding from the prestigious National Institutes of Health, according to a recent study.

KU's pharmacy school secured more than \$16 million in NIH research funding in fiscal year 2005, according to data compiled by the American Association of Colleges of Pharmacy. That amount represents an increase of more than \$3 million from the previous year, when the school garnered just over \$13 million.



Kansas Bioscience Authority

The Kansas Economic Growth Act created the Kansas Bioscience Authority (BioAuthority) - a completely independent body composed of prominent local and national leaders in the areas of technology, science and business. This group will guide the state in the investment of over \$580 million generated by the Kansas Economic Growth Act. The State will look to the Bio Authority to develop an infrastructure that makes Kansas a center for bioscience research, innovation and commercialization.

KTEC is providing support services to the Bio Authority. From facilitating the BioAuthority business planning process, to assisting with basic operational and support issues, KTEC is working to ensure that the BioAuthority is successful in its mission.

Mission of the Kansas Bioscience Authority

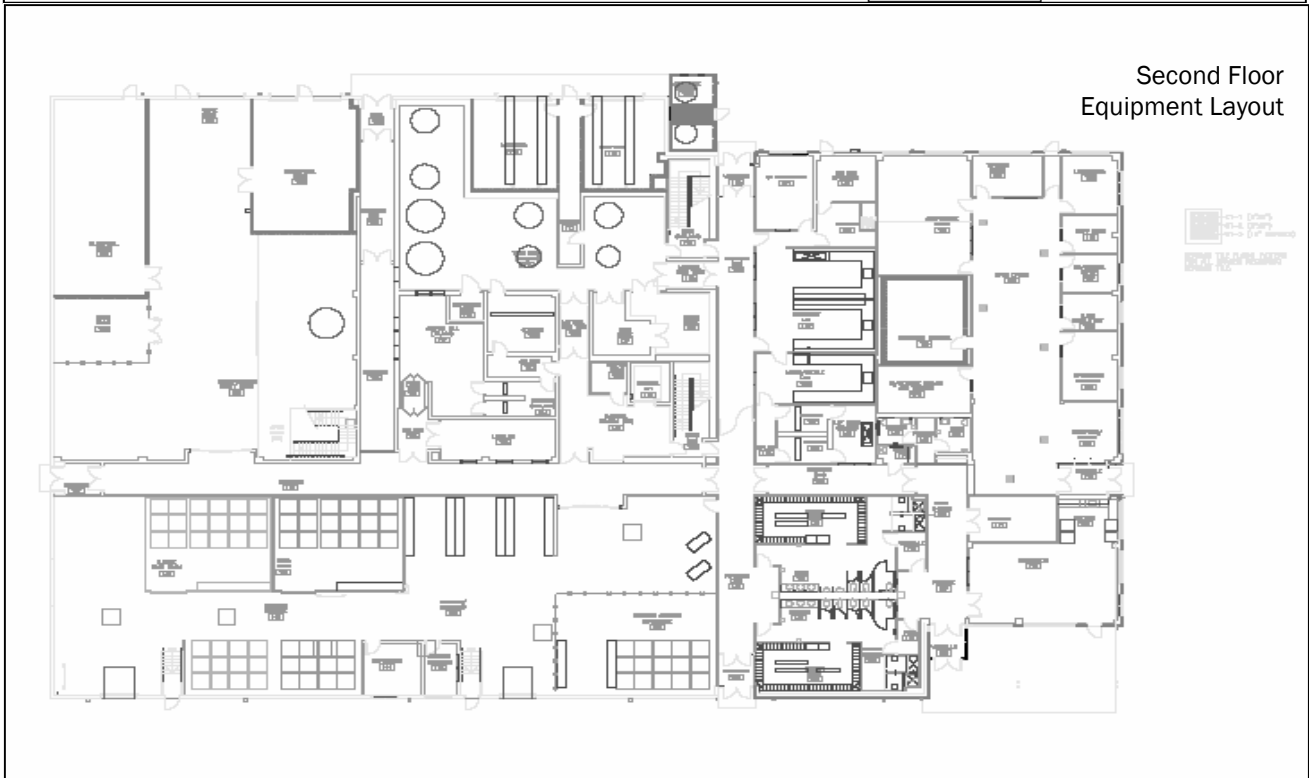
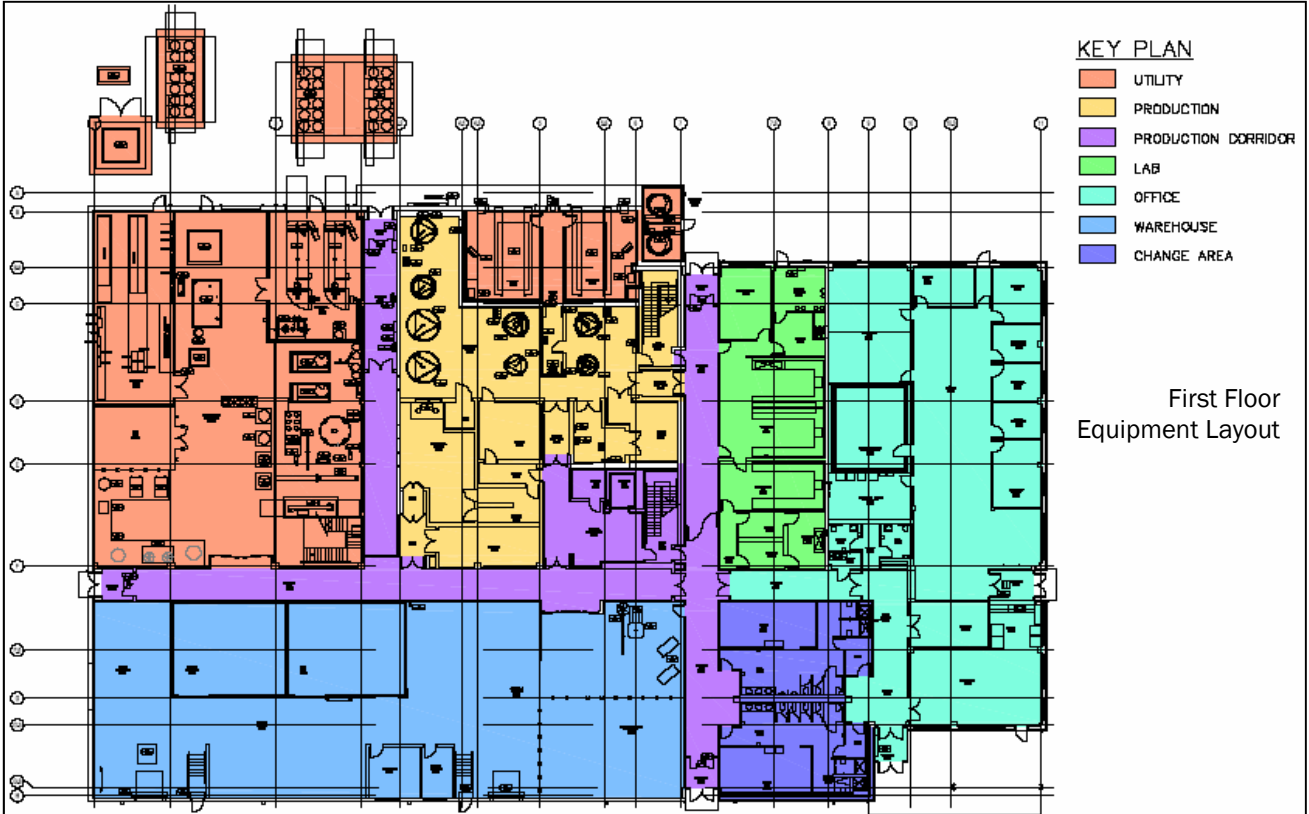
Make Kansas the most desirable state in which to conduct, facilitate, support, fund and perform plant, animal and human bioscience research, development and commercialization, to make Kansas a national leader in bioscience, to create new jobs, foster economic growth, advance scientific knowledge and improve the quality of life for the citizens of the state of Kansas.

FLOOR PLANS

3780 Greenway Circle
Lawrence, Kansas



PREDIUM



PICTURES

3780 Greenway Circle
Lawrence, Kansas



PREDIUM

